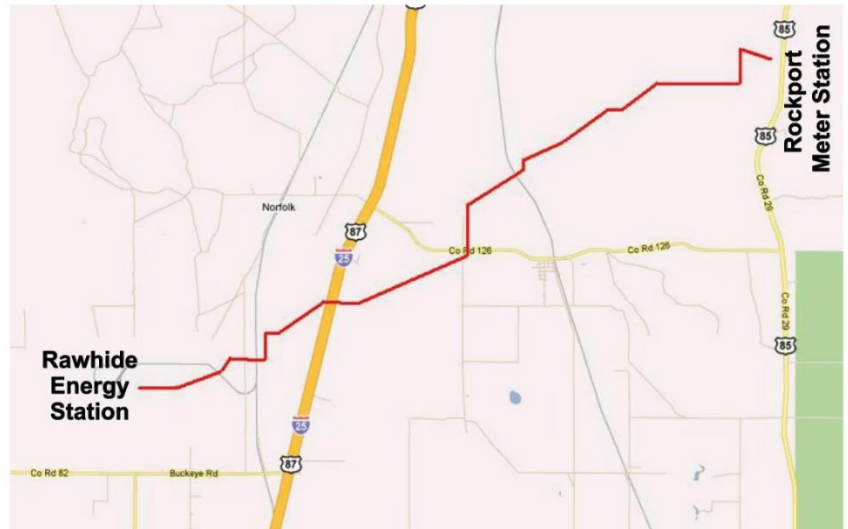


## Platte River's natural gas pipeline public awareness information

### Pipeline purpose and reliability

Platte River Power Authority (Platte River) operates one 16" pipeline transporting **non-odorized** natural gas in Weld and Larimer counties, Colorado to supply combustion turbines for electric generation. The pipeline operates at 640 psig with a maximum allowable operating pressure of 1200 psig. The pipeline was hydrostatically pressure tested to 1800 psig.



### Prevention measures undertaken

Platte River maintains and monitors the pipeline in accordance with 49 CFR Part 192 to ensure public safety and pipeline integrity.

### Natural gas characteristics and leak recognition

Natural gas is colorless, odorless, tasteless and lighter than air, so it can rise above the ground and disperse quickly. Natural gas is highly flammable when mixed with air. Although non-toxic in large quantities, natural gas will displace oxygen leading to suffocation.

Natural gas leaks can be recognized by the sensory cues listed below:

- Hissing or roaring sound depending on leak size
- Vaporous fogs
- Fire coming out of a hole in the ground or fire on top of the ground
- Dirt blowing from a hole in the ground
- An area of frozen ground in the summer
- Patches of dead vegetation or grass in an otherwise healthy area
- Oil sheen on water
- Continuous bubbling in wet areas

## Leak response

If you encounter a leak, follow the guidelines below:

- Immediately leave the area of the leak, traveling upwind by foot
- Contact the Rawhide Control Room at (970) 229.1736 and 911
  - Platte River keeps in routine communication with the local emergency officials on response procedures in the case of a natural gas release
- **DO NOT** use possible sources of ignition in the area, this includes but is not limited to:
  - Open flames
  - Electronic devices
  - Motor vehicles
- **DO NOT** attempt to put out a fire fueled by natural gas. Only trained emergency officials are qualified to extinguish natural gas fires

## Damage prevention

Platte River has pipeline markers located along its natural gas line to represent a general location of the pipeline. Before digging always call either the Utility Notification Center of Colorado at **1(800) 922.1987** or the national call-before-you-dig phone number (**811**) to have Platte River's natural gas pipe accurately located. For more information visit [call811.com](http://call811.com).

Pipeline right-of-ways must **not** have obstructions or any structures that prevent access to the pipeline for routine inspections, maintenance, elimination of third-party damage, or an emergency. If Platte River's pipeline crosses your property, do not build, dig or plant anything that can impair access to the pipeline.

## Platte River's natural gas pipeline signage



## Additional information

For additional information on Platte River's natural gas pipeline call Platte River Power Authority's Rawhide Technical Services Manager at (970) 229.1763 or visit the National Piping Mapping System website at [npms.phmsa.dot.gov](http://npms.phmsa.dot.gov).



Provide your feedback on Platte River's natural gas pipeline public awareness communications and program at [prpa.org/pipeline-awareness](http://prpa.org/pipeline-awareness)