



**Par Rocky Mountain Midstream LLC**

**ABOUT PAR PACIFIC**

Par Pacific is a growth-oriented company that owns and operates market-leading energy and infrastructure businesses in logistically-complex markets. Par Pacific combines experience in the oil and gas industry with logistics expertise to deliver transportation fuels to the Rocky Mountain region. The company has operations across the Rockies, including Billings, Bozeman, Helena, and Spokane.

**WHAT ARE THE SIGNS OF A PIPELINE LEAK?**

- **Sight:** Oily or rainbow sheen on water surface, water bubbling or being blown into the air, a pool of liquid on the ground, dead or discolored vegetation amongst healthy plants, and flames near a pipeline.
- **Sound:** Hissing or gurgling sound near a pipeline.
- **Smell:** A petroleum odor.

**WHAT TO DO IN THE EVENT A LEAK WERE TO OCCUR:**

- Turn off all equipment and eliminate any ignition sources without risking injury.
- Leave the area by foot immediately. Try to direct any other bystanders to leave the area. Attempt to stay upwind.
- From a safe location, notify Par Montana or Par Rocky Mountain Midstream immediately and call 911 or your local emergency response number. Par Montana or Par Rocky Mountain Midstream and the 911 operator will need your name, your phone number, a brief description of the incident, and the location so the proper response can be initiated.

**WHAT NOT TO DO IN THE EVENT A LEAK WERE TO OCCUR:**

- **DO NOT** cause any open flame or other potential source of ignition such as an electrical switch, vehicle ignition, light a match, etc. Do not start motor vehicles or electrical equipment. Do not ring doorbells to notify others of the leak. Knock with your hand to avoid potential sparks from electric doorbells.
- **DO NOT** come into direct contact with any escaping liquids or vapors.
- **DO NOT** drive into a leak or vapor cloud while leaving the area.
- **DO NOT** attempt to operate any pipeline valves yourself. You may inadvertently route more product to the leak or cause a secondary incident.
- **DO NOT** attempt to extinguish a petroleum product fire. Wait for local firemen and other professionals trained to deal with such emergencies.

**PIPELINE SAFETY**

System failures occur infrequently along the nation's network of interstate crude oil and refined products pipeline facilities, and many of these are caused by damage from others digging near the pipeline. We watch for unauthorized digging, but we request your help to notify us.

**ALWAYS CALL 811 BEFORE YOU DIG!**



**PIPELINE LOCATION AND MARKERS**

Pipeline markers are used to indicate the approximate location of a crude oil and refined products pipeline and to provide contact information. Aerial patrol planes also use the markers to identify the pipeline route.

**EMERGENCY CONTACT:**  
1-888-550-7766

<b>PRODUCTS/ DOT GUIDEBOOK ID#/ GUIDE#:</b>		
Crude Oil	1267	128
Diesel	1202	128
Gasoline	1203	128

**MONTANA**  
**COUNTIES OF OPERATION:**

Carbon	Lewis and Clark
Gallatin	Yellowstone

*Changes may occur. Contact the operator to discuss their pipeline systems and areas of operation.*

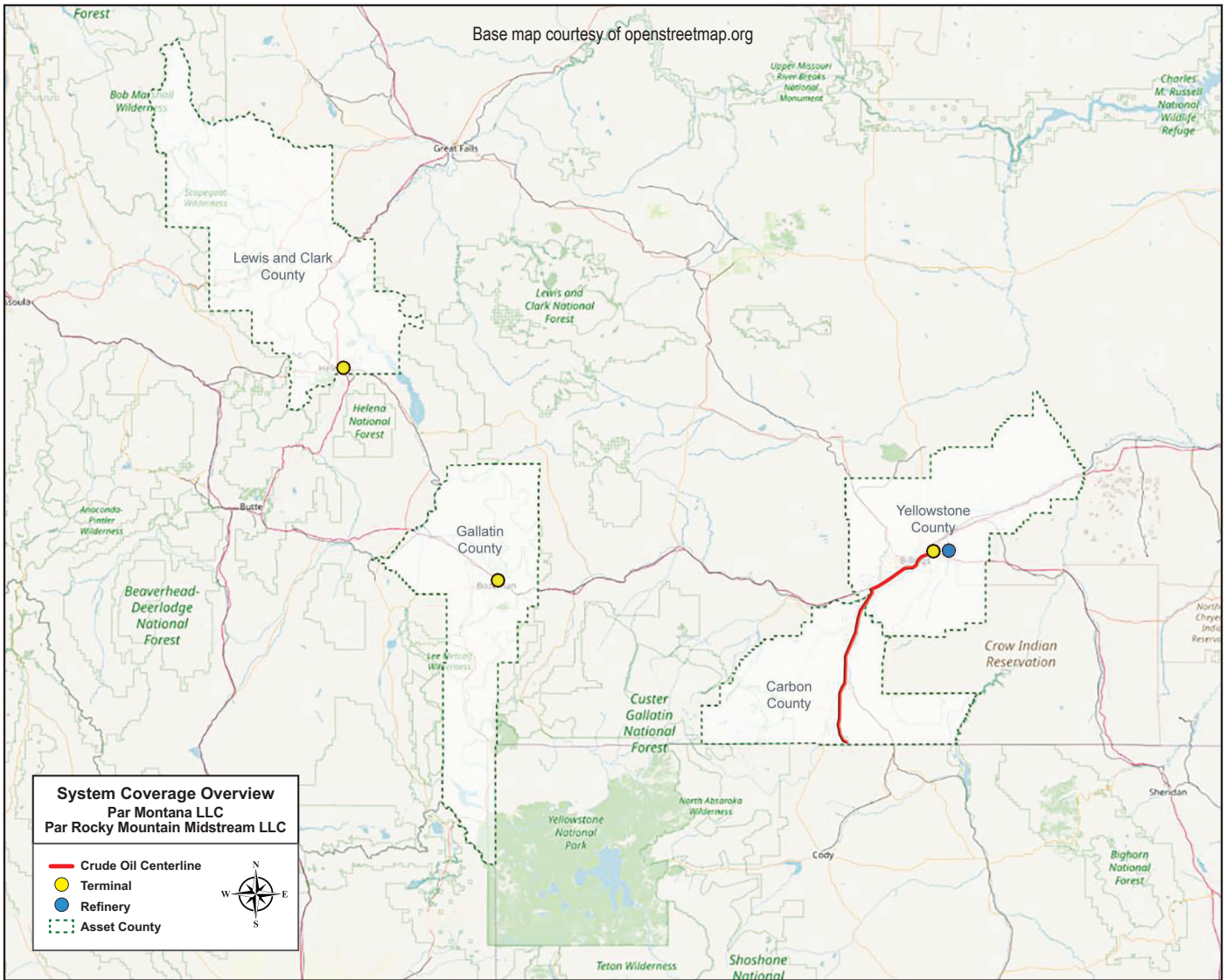
Markers should never be removed or relocated by anyone other than a pipeline operator.

You can also find out where other companies' pipelines are in your area by going to the National Pipeline Mapping System website at [www.npms.phmsa.dot.gov](http://www.npms.phmsa.dot.gov).



**EMERGENCY RESPONSE PLANS**

An Emergency Response Plan is developed for each pipeline facility to contain, control and mitigate the various types of emergency conditions/ situations that could occur at one of our facilities. For more information regarding our emergency response plans and procedures, contact us directly.



Pipeline Diameter: 12"