



MIDSTREAM

Headquarters

2323 Victory Ave STE#1400 Dallas TX 75219

Local Office

77 County Rd 351 Sinclair WY 82334

Pipeline Operations: We are an evolving energy company, with a family of enduring brands that provide essential fuel and specialty products for modern and future life. Our Midstream operations in Wyoming fall under Sinclair Transportation & Holly Energy Partners Operating LP. In Albany County, the pipeline systems include Medicine Bow (Refined Products, 56.47 miles). In Carbon County, systems include Casper Crude (Crude, 102.98 miles), Medicine Bow (Refined Products, 60.95 miles), SWRC Gas (Natural Gas, 6.67 miles), Salvation (Refined Products, 51.44 miles), and Sand Draw (Crude, 41.87 miles). Converse County features Guernsey Crude (Crude, 47.70 miles). In Fremont County, systems include Rocky Mountain (Crude, 28.10 miles) and Sand Draw (Crude, 59.05 miles). Laramie County includes Cheyenne (Refined Products, 43.00 miles), Guernsey Crude (Crude, 40.46 miles), and Medicine Bow (Refined Products, 1.27 miles). Natrona County supports Casper Crude (Crude, 101.62 miles; Sweet Crude, 0.02 miles), Guernsey Crude (Crude, 19.49 miles), Rocky Mountain (Crude, 77.24 miles), and Salvation (Refined Products, 62.56 miles). In Platte County, Guernsey Crude spans 106.31 miles (Crude). Sweetwater County hosts Rocky Mountain (Crude, 122.05 miles) and Sand Draw (Crude, 12.17 miles). Finally, Uinta County includes Rocky Mountain (Crude, 67.99 miles).

Products Transported:
Gasoline, Diesel Fuel, Crude Oil, Natural Gas

24-HOUR EMERGENCY CONTACT:

1-877-748-4464

Wyoming Counties of Operation:

Uinta	Natrona
Sweetwater	Converse
Carbon	Platte
Albany	Fremont
Laramie	

Commitment to Environmental, Health, and Safety: We are committed to compliance with regulatory requirements, and pursuing standards of environmental, health, and safety practices that reflect HFSM's core values. We pledge to care for the environment, our employees and the public, while fostering continuous learning through comprehensive training and development programs. Safe work practices will be integrated into all activities, and we will maintain a state of readiness to effectively respond to emergencies. We strive to enhance planning, promote ownership, execute effectively, and foster clear communication with our stakeholders.

811 CALL BEFORE YOU DIG: Where we operate, HFSM is a member of each State's One-Call system. This is a free service that informs underground utilities and pipeline owners of any planned excavation activities that could potentially affect our pipelines. The management of all One-Calls is conducted according to state requirements, and we encourage all excavators to use 8-1-1 to promote safe digging practices.

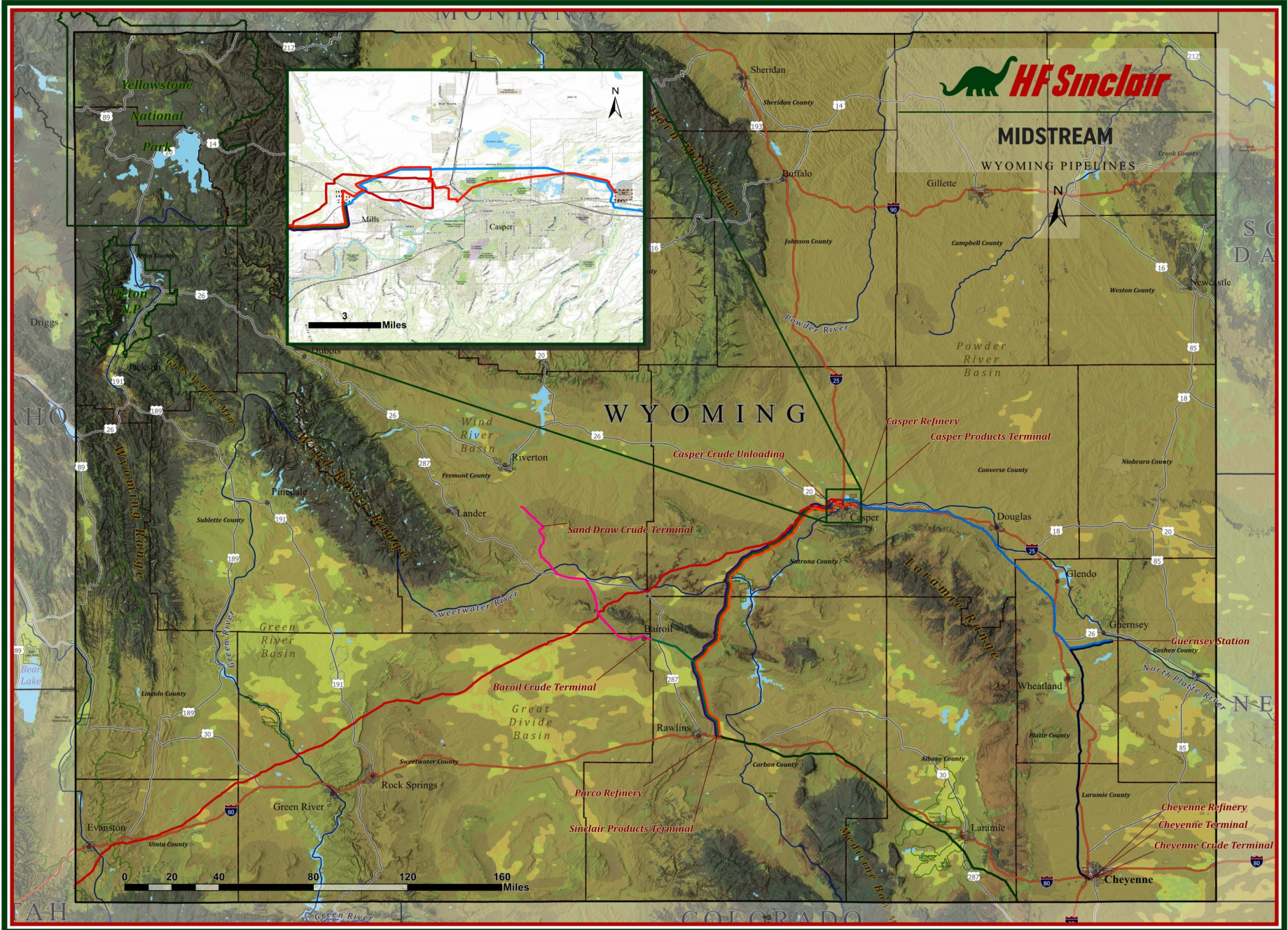
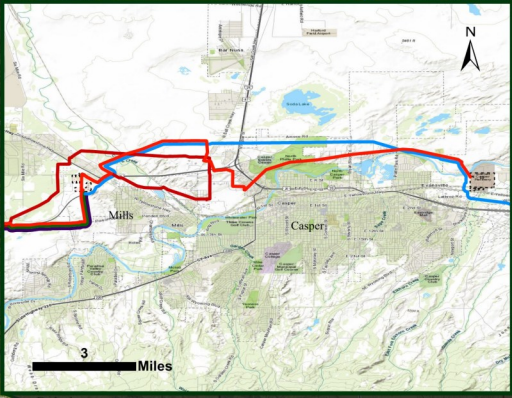


**SAFETY IS IN YOUR HANDS.
EVERY DIG. EVERY TIME.**





MIDSTREAM WYOMING PIPELINES



WYOMING

0 20 40 80 120 160 Miles

Sand Draw Crude Terminal

Baroil Crude Terminal

Casper Crude Unloading

Casper Refinery

Casper Products Terminal

Parco Refinery

Sinclair Products Terminal

Guernsey Station

Cheyenne Refinery

Cheyenne Terminal

Cheyenne Crude Terminal