



Pipeline Association
for Public Awareness

Annual Membership Meeting

September 26, 2018 Denver, Colorado

Meeting Agenda

- 9:00 am Election of Directors, Reports to the Membership
- 10:30 am Excavator, Public Officials, and ER Programs
- 12:00 am *Lunch***
- 1:00 pm Schools Program, 811 Awareness - JJ Harrison,
Ag Program, Drain Tile Safety Coalition
- 2:15 pm Distribution Public Awareness Council, Additional
Resources, 2018 Stakeholder Surveys
Other Initiatives and General Discussion
- 3:15 pm Adjourn**

Election of Directors

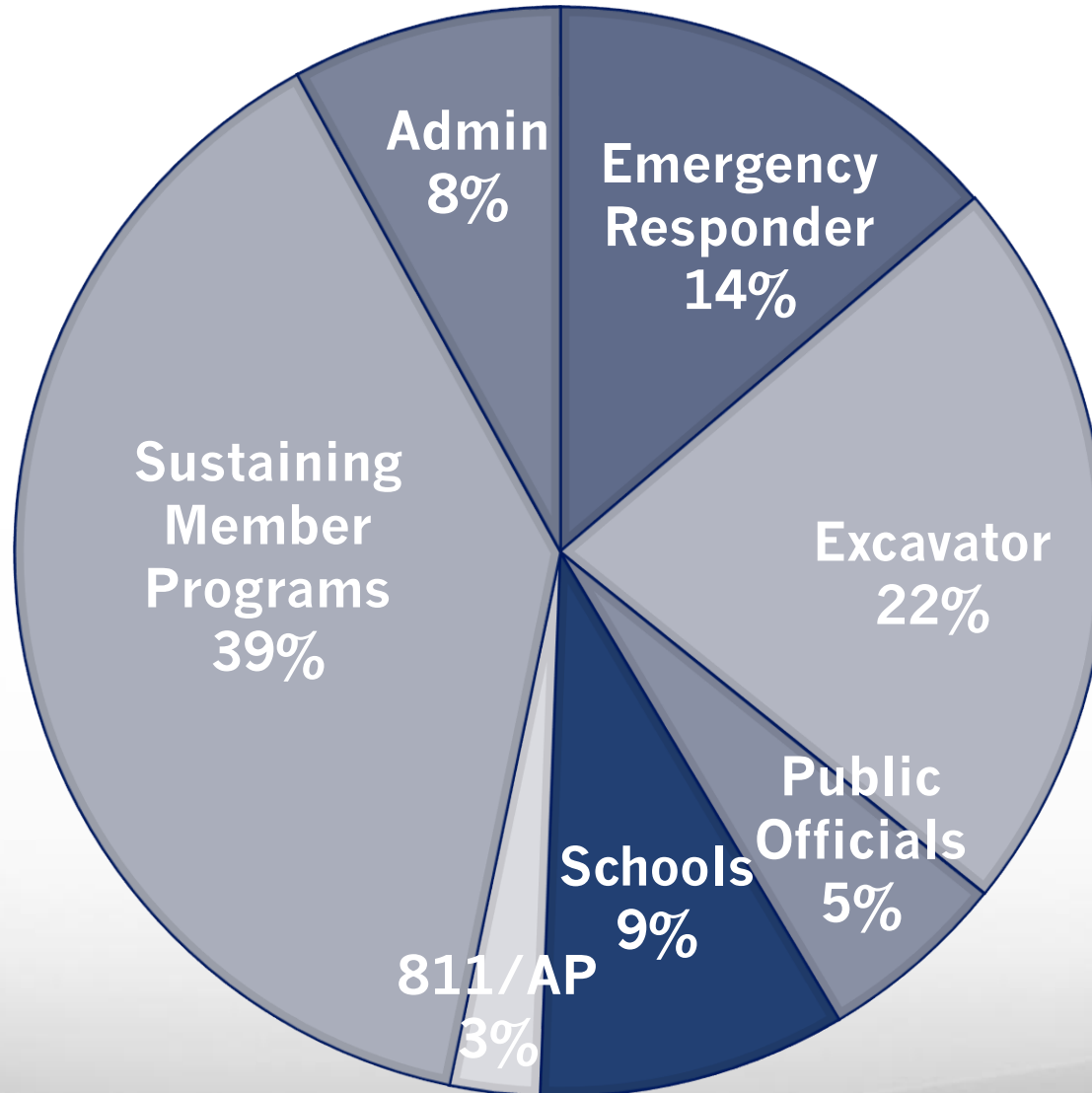
- Additional Nominations for:
 - Gas Distribution Facilities
 - Gas Gathering Facilities
 - Storage and Other Facilities

- Member Requests and Other Business
 - Succession Planning

Annual Report – 2017

	<u>2017 Actual</u>	<u>2016 Actual</u>	<u>Diff</u>
Revenue	\$2,181,543.91	\$1,969,981.11	10.7%
Expenses	\$1,671,288.06	\$1,652,869.65	1.1%
Net Income	\$510,255.85	\$317,111.46	60.9%
Total Assets	\$1,670,729.84	\$1,166,501.38	

2018 PROJECTED EXPENSES: \$2,121,000



Association Goals and Objectives

1. Further the stated purposes of the organization

All Stakeholders have the information they need or want

2. Continue to improve the existing programs and develop new elements

3. Provide support for State Associations and Sustaining Member Organizations

4. Focus on the needs of existing Pipeline Members

5. Improve member communications

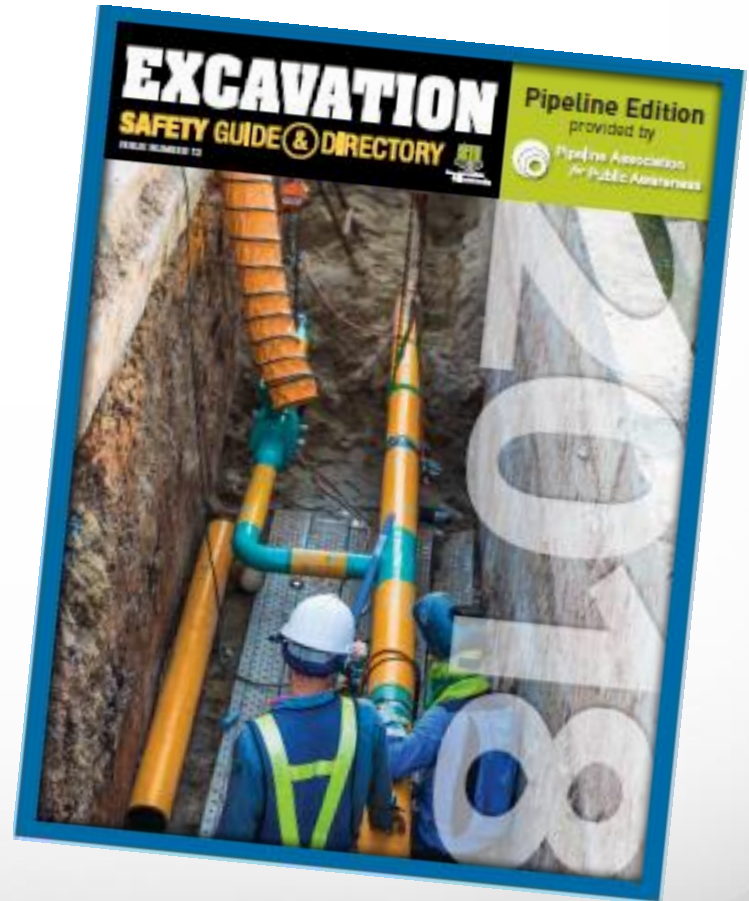
Sustaining Member Organizations

- Colorado Pipeline Association (CoPA)
- Iowa Pipeline Association (IPA)
- Montana Liquids and Gas Pipeline Association (MLGPA)
- North Dakota Pipeline Association (NDPA)
- Oklahoma Pipeline Awareness Liaison (OPAL)
- Pipeline Association of the Northwest (PANW)
- South Dakota Pipeline Association (SDPA)
- Utah Pipeline Association (UPA)
- Wyoming Pipeline Association (WyPA)
- Distribution Public Awareness Council (DPAC)
- Pipeline Operators for Ag Safety (POAS)
- Drain Tile Safety Coalition (DTSC)
- Pipeline Operator Safety Partnership (POSP)

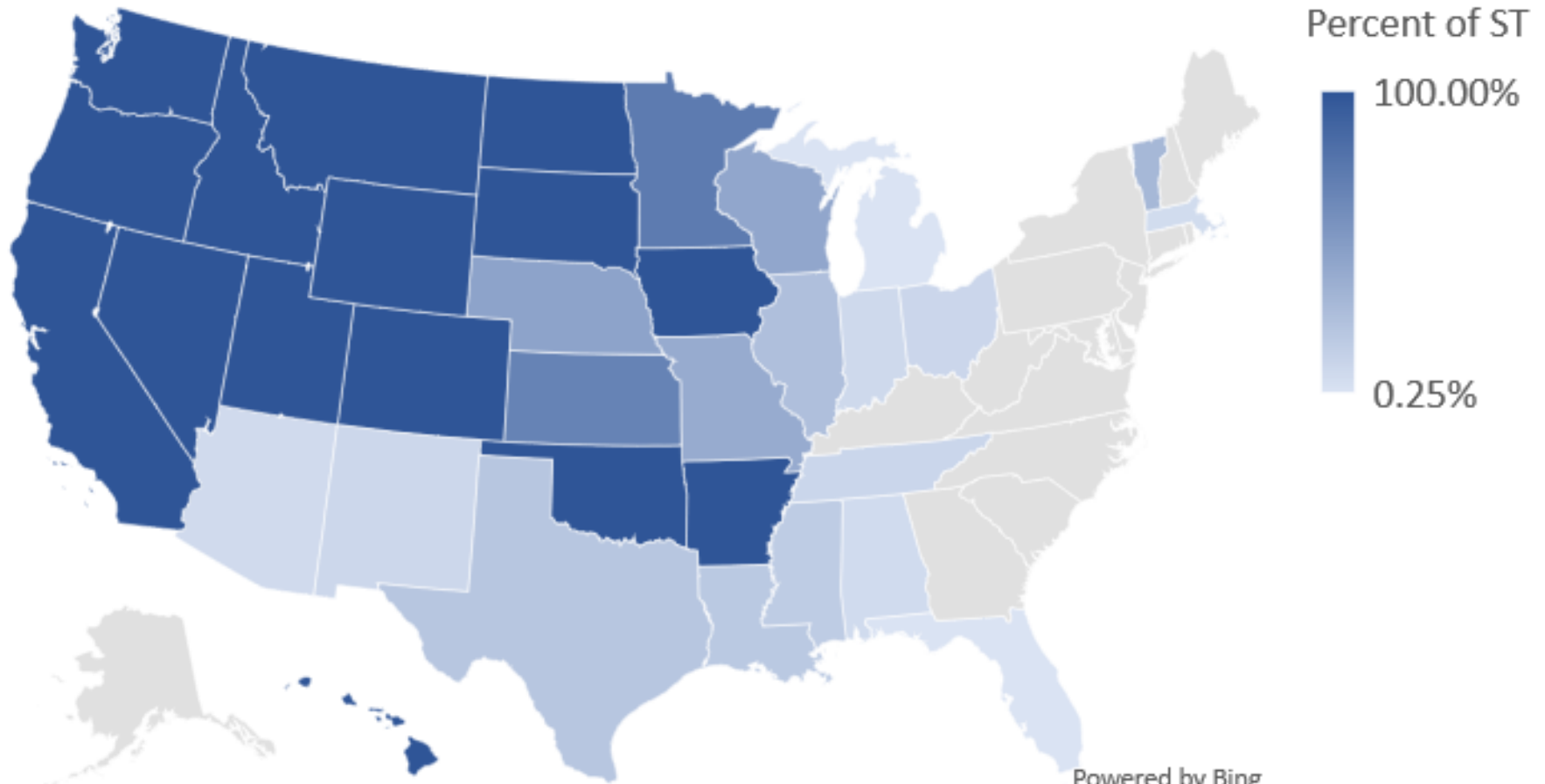
Morning Break

Excavator Program

- **Excavation Safety Guide Pipeline Edition**
- Custom Pipeline Pages
- Member Contact Directory
- Extra copies to any One-Call
- Statewide coverage in 15 states (AR, CA, CO, HI, IA, ID, MT, ND, NV, OK, OR, SD, UT, WA, WY)
- 348 Individual counties in 19 other states
- 455,000 excavators in 2018
- \$1.10 per excavator



Excavator Coverage Map - 2018



Powered by Bing
© GeoNames, MSFT, Navteq

Excavator Program – 2018 Activities

- **Continued Custom Pipeline Content:**
 - Pipeline Safety Guidelines
 - Pipeline Location Information
 - Valve closure article
 - Product descriptions page
 - Leak, Hazard and Response Chart
 - “Changes to the Laws in Your State” section
 - Expanded security message
 - Full text of 49 CFR Part 196
 - “*Pipelines*” downloadable safety video

Excavator Program – 2018 Activities

➤ **Performed Outreach Evaluation:**

- Two Counties – Sutter, CA & Mohave, AZ
- Five data sources
- Single record positive validations
- Scope determinations
- **Percent Reach:**
 - ✓ 67% in California
 - ✓ 89% in Arizona
 - ✓ 35% - 45% other states (extrapolated)

Excavator Program – 2019 Activities

- ***Add content explaining how to request additional information from operators***
- ***California – exclude contractors with inactive licenses and include data from commercial sources (InfoUSA and Acxiom)***
 - *Members to confirm*
- ***Continue to evaluate additional list sources***
 - *Additional State lists and commercial sources*
- ***New content in place of valve article?***
- ***Other suggestions for improvements?***

Public Officials Newsletter Program

- Newsletter - *Pipeline Awareness*
- Custom cover letter with member information by State or County
- State and County level officials
- School Districts included
- Direct Mailing in August
- Mapping Webinar in September
- 1083 Counties, 37 States
- 49,000 Officials in 2018
- Base Dues \$125 per County



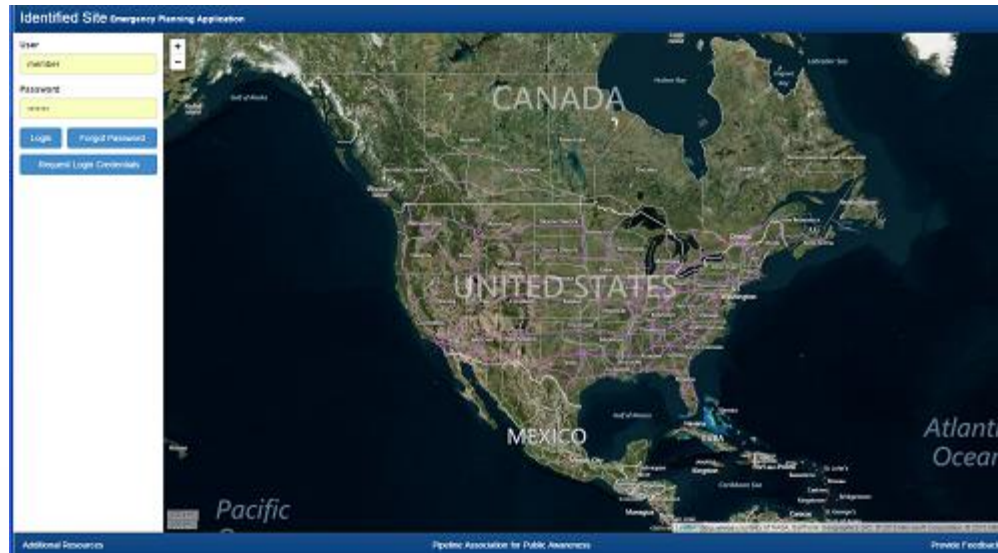
PO Newsletter - 2018 Activities

- **Continued the new layout and design for the newsletter, with a few adjustments**
 - Additional titles on cover page
 - Links to additional items and articles
- **Added Mapping Webinars**
- **Created new web form for information requests**
- **Added paper form for information requests and prepaid return envelope in packet**
- **Promoted new NVFC toolkit and web site**
- **Researched and included additional Townships in the mailing list**

PO Newsletter - 2019 Activities

- ***Hold second Mapping Webinar, February 7, 2019***
- ***Continue to refine the “Standard Content”***
- ***Continue the information request forms***
- ***Utilize US Census Bureau data to identify missing Townships or Special Districts with highway or utility employees***
- ***Topics for 2019 articles to be finalized at the January Program Meeting (1-9-19)***
- ***Other suggestions?***

Identified Site Registry



- Web based mapping application - **ISEPA**
- Buffers are based on the evacuation distance
- Letter to agencies in Oct. – **Unique Username and Password**
- Site data sent to members via email and available for download
- Dues are \$100 per County

Identified Site Emergency Planning Application

Identified Site Emergency Planning Application User member | Logout

[View Instructions](#)

Select State:
Wyoming

Select County:
Natrona

Base Map:
Aerial with labels

Overlays:
 Pipelines
 Evacuation Areas
 Identified Sites

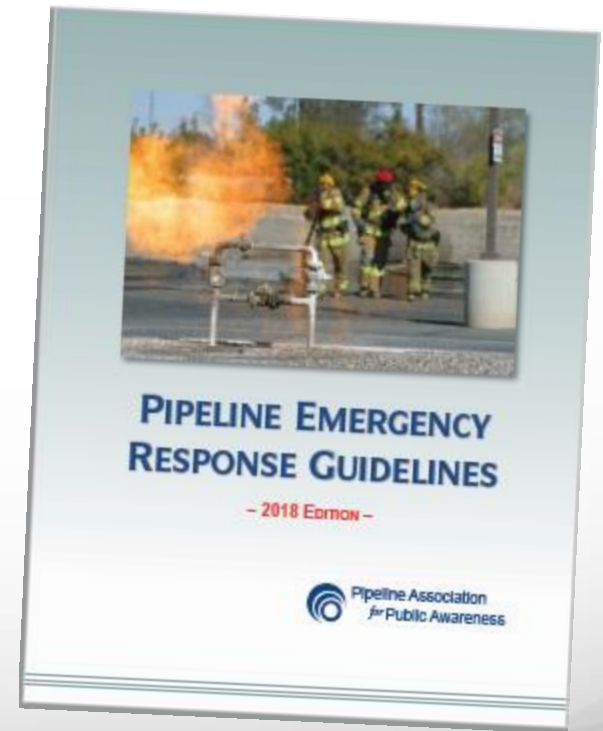
[Add a New Site](#)
[Download Site Data](#)
[Download User Report](#)

Product	Petroleum Liquids
Size	8 Inch
Evacuation	1000 feet
Emergency	800 321 3594
Company	Sinclair Pipeline Company
Contact	Lon Brown lon.brown@sinclairoil.com
Documents	Document Link

Additional Resources Pipeline Association for Public Awareness Provide Feedback

Emergency Responder Program

- **Four page cover letter customized by County**
- **Pipeline Emergency Response Guidelines & Training CD**
- ***Pipeline Awareness Newsletter***
- ISEPA Mapping Application
- ER Capabilities Application
- Communication sent in September
- 1052 Counties in 35 states
- 27,000 Agencies in 2018
- Base dues are \$300 per County



Emergency Response Capabilities

Online application – freely available to all pipeline companies and emergency response agencies

The screenshot shows a web application interface with three tabs: "View Capabilities by Organization" (selected), "View Capabilities by Location", and "Add / Edit Capabilities". There are also links for "Help" and "Back".

Capabilities by Organization

Use the fields below to generate a capability report that includes the agencies and pipeline companies within your organization's jurisdiction or pipeline footprint.

Enter Organization Name

As you type, names of organizations will appear. Click on the name of an organization from the dropdown to select.

If your organization is not currently in the system, please use the "ADD/EDIT CAPABILITIES" tab above to submit information.
To generate a report for a specific state or county select the "VIEW CAPABILITIES BY LOCATION" tab above.

Organization Name:

Select Organization Type(s)

[Select All](#)

<input type="checkbox"/> CEMA or LEPC	<input type="checkbox"/> Hazmat Unit	<input type="checkbox"/> PSAP or 911 Center
<input type="checkbox"/> EMS Department	<input type="checkbox"/> Pipeline Company	<input type="checkbox"/> Sheriff Department
<input type="checkbox"/> Fire Department	<input type="checkbox"/> Police Department	<input type="checkbox"/> State Police or Highway Patrol

ER Program – 2018 Activities

- **Modified cover of the PERG to accentuate the year of the publication and included info about NVFC toolkit in Resources section**
- **Recreated all nine response scenarios and included these on the CD**
- **Modified DD 24 video content and re-published it as *Excavation Emergencies***
- **Developed new *Information Request* web form**
- **Compiled email addresses for CEMA's in program counties**
- **Email communications to CEMA's to begin in Q4**

ER Program – 2019 Activities

- ***Pipeline Emergency Response Guidelines***
 - *Add info about submitting Identified Sites in ISEPA mapping application*
- ***Training Web Site / CD***
 - *Recreate basic Emergency Response video*
- ***Further develop email communications with CEMA's***
- ***ISEPA mapping application enhancements?***
- ***Other improvements?***

Lunch

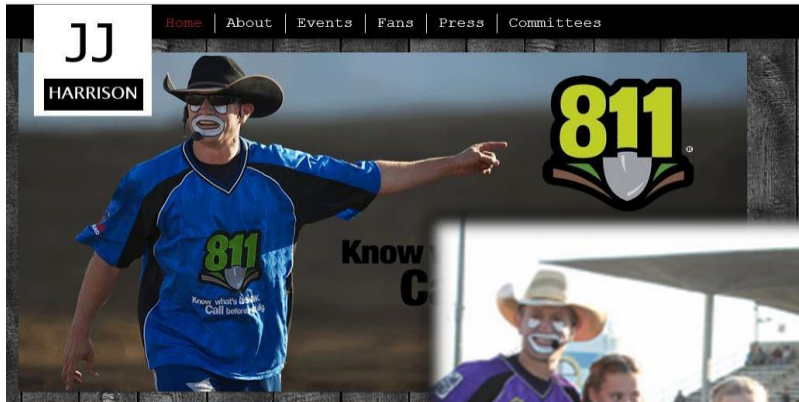
School Pipeline Safety

- Partnership – *Danielle Dawn Smalley Foundation*
- School specific web sites
- Annual communications in the fall
- Tools for operators to use
- Three levels of participation:
 - Tier I – web site and annual mailing
 - Tier II – web site, annual mailing, and **web meeting**
 - Tier III – web site, annual mailing, and **personal visit**
- 4 year commitment required
- Over 620 schools enrolled in 2018

811 Awareness – JJ Harrison

- Directed toward the general public - rodeo events
- 811 logo is displayed -
 - Front and back of Jersey and shirts
 - Rodeo Barrel and promotional items
 - Pickup truck and semi-trailer
 - Web page and social media sites
- 33 events in 10 States (CA, CO, HI, MT, NV, OR, SD, TX, VA, WA) over 500,000 attendees
- Additional 811 information provided at events
- Sponsorships are flexible (no minimum amount and Association membership is not required)

[Online Registration Form](#)



811 Awareness – JJ Harrison

Drawing for Autographed Jersey
Current Sponsors at the \$5,000 level

Montana 811

Oregon Utility Notification Center

Plains All American Pipeline

TransCanada



Ag Communications Program

- National Media Campaign Directed Toward Farmers
 - Web Content and Materials (supported by membership)
 - Farmers Almanac Print and Digital Media
 - Targeted Social Media
 - Earned Media Placement in Print and Online Publications
 - Partnerships with Ag Co-op's (CHS)
 - Baseline Survey and Four Year Effectiveness Evaluations
- Conducted over a Four Year Cycle
- Potential for future State or Regional Programs
- Directed by the Ag Committee; all sponsors are members of the committee

Ag Communications Program

- Participation is open to any organization or company (Association membership is not required)
- Three levels of sponsorship:
 - **\$3,000** per year – applies to smaller operators with less than 1,000 miles of transmission pipeline
 - **\$7,000** per year – applies to medium sized operators with 1,000 to 5,000 miles of transmission pipeline
 - **\$15,000** per year – applies to larger operators with more than 5,000 miles of transmission pipeline
- Four year commitment is necessary, sponsors will receive invoices in February

[Online Registration Form](#)

Afternoon Break

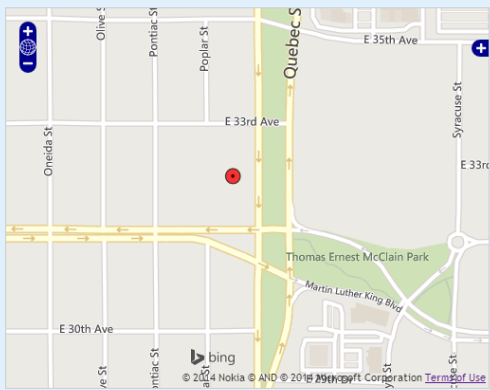
Distribution Public Awareness Council

Pipelines Nearby

Web-based mobile friendly application
www.pipelinesnearby.org

PIPELINES NEARBY™

Click a Point on the Map | Enter Address | Enter GPS Coordinates



Latitude: 39.76
Longitude: -104.90

Results will be limited to the five member pipelines closest to your location.

SEARCH



Subscribe to our email list **SUBMIT**

Search **GO** **MEMBERS**

[Home](#) | [About](#) | [Government & Emergency Officials](#) | [Excavators](#) | [Residents & Businesses](#) | [Schools](#) | [Contact](#)

PIPELINES NEARBY™ Latitude: 39.76291014061563 | Longitude: -104.90401673317032 **RETURN TO RESULTS**

Un-odorized Natural Gas **2.46 Miles North**
Operated by: **Emergency: 800-698-7811**
Xcel Energy, PSCo - Gas Transmission **Non-Emergency: 800-895-4999**

Indications of a Leak

- ✓ A loud roaring sound like a jet engine
- ✓ A hissing or whistling noise
- ✓ Fire coming out of or on top of the ground
- ✓ Dirt blowing from a hole in the ground
- ✓ An area of frozen ground in the summer
- ✓ An unusual area of melted snow in the winter
- ✓ An area of dead vegetation
- ✓ Bubbling in pools of water

Hazards of a release

- ✓ Highly flammable and easily ignited by heat or sparks
- ✓ Will displace oxygen and can cause asphyxiation
- ✓ Fire may produce irritating and/or toxic gases
- ✓ Vapors may cause dizziness or asphyxiation without warning
- ✓ Vapors may form an explosive mixture with air
- ✓ Is lighter than air and can migrate into enclosed spaces

Emergency response

- ✓ Avoid any action that may create a spark
- ✓ Do NOT start vehicles, switch lights, or hang up phones
- ✓ Evacuate the area on foot in an upwind and uphill direction
- ✓ Alert others to evacuate the area and keep people away
- ✓ From a safe location, call 911 to report the emergency
- ✓ Call the pipeline operator and report the event
- ✓ Wait for emergency responders to arrive
- ✓ Do NOT attempt to close any pipeline valves

Pipeline Marker Decals

Odorized Natural Gas

EMERGENCY

SIGNS OF A LEAK:

- A Smell like rotten eggs or a burnt match
- Hissing or whistling noise
- Dirt blowing from a hole
- Blowing or bubbling water
- An area of dead vegetation
- Frozen ground in summer
- Melted snow in winter
- Loud roaring sound
- Fire on top of the ground

RESPONSE

ACT IMMEDIATELY:

- Avoid all ignition sources
- DO NOT start vehicles
- DO NOT use cell phones
- DO NOT close valves
- Abandon all equipment
- Evacuate the area
- Move to a safe location
- Call 911 to report incident
- Call the pipeline company
- Keep others away
- Wait for responders

INFORMATION

www.pipelineawareness.org
www.pipelinesnearby.org

Photo 475 ID-588782P-018

Un-odorized Natural Gas

EMERGENCY

SIGNS OF A LEAK:

- Hissing or whistling noise
- Dirt blowing from a hole
- Blowing or bubbling water
- An area of dead vegetation
- Frozen ground in summer
- Melted snow in winter
- Loud roaring sound
- Fire on top of the ground

RESPONSE

ACT IMMEDIATELY:

- Avoid all ignition sources
- DO NOT start vehicles
- DO NOT use cell phones
- DO NOT close valves
- Abandon all equipment
- Evacuate the area
- Move to a safe location
- Call 911 to report incident
- Call the pipeline company
- Keep others away
- Wait for responders

INFORMATION

www.pipelineawareness.org
www.pipelinesnearby.org

Photo 475 ID-588782P-118

Petroleum Liquids

EMERGENCY

SIGNS OF A LEAK:

- Liquid on the ground
- An odor like petroleum
- Sheen on surface of water
- An unusual odor
- An area of dead vegetation

RESPONSE

ACT IMMEDIATELY:

- Avoid all ignition sources
- DO NOT start vehicles
- DO NOT use cell phones
- DO NOT close valves
- Abandon all equipment
- Evacuate the area
- Move to a safe location
- Call 911 to report incident
- Call the pipeline company
- Keep others away
- Wait for responders

INFORMATION

www.pipelineawareness.org
www.pipelinesnearby.org

Photo 475 ID-588782P-1

Affected Public Materials

Pipeline Products & Facilities

NATURAL GAS is the predominant product found in gas distribution pipelines, and with few exceptions, is transported via pipeline in its gaseous form. Like crude oil, it is a naturally occurring resource formed millions of years ago as a result of heat and pressure acting on decayed organic material. It is extracted from wells and transported through gathering pipelines to processing facilities. From these facilities it is transported through transmission pipelines to distribution centers or distribution pipeline systems. The main ingredient in natural gas is methane (94 percent). Natural gas is odorless, colorless, tasteless and nontoxic in its natural state. When transported via transmission pipelines, natural gas typically does not have odorant added. An odorant (called mercaptan) is normally added when it is delivered to a distribution system. At ambient temperatures, natural gas remains lighter than air. However, it can be compressed (CNG) under high pressure to make it convenient for use in other applications or liquefied (LNG) under extremely cold temperatures (-260° F) to facilitate transportation.

PETROLEUM GAS is a mixture of gaseous hydrocarbons, primarily propane, butane and ethane, which are easily liquefied under pressure and are used for residential or commercial heating and other industrial applications. Propane and butane are often stored and transported under pressure as liquid (LPG) in portable containers for use as fuel for heating and cooking applications. LPG is usually transported through hazardous liquid transmission pipelines and may also be identified as Highly Volatile Liquids (HVLs) or Natural Gas Liquids (NGLs). Vaporized propane and butane may also be found in small distribution systems. LPG is a tasteless, colorless and odorless gas. When transported via transmission pipelines it typically will not have odorant added. Odorant is added when LPG is offloaded to a distribution pipeline system or transport tanks to facilitate leak detection.

PETROLEUM LIQUIDS is a broad term covering many products, including crude oil, gasoline, diesel fuel, aviation gasoline, jet fuel, fuel oil, kerosene, naphtha, kylene and other refined products. Crude oil is unrefined petroleum that is extracted from beneath the earth's surface through wells. As it comes from the well, crude oil contains a mixture of oil, gas, water and other impurities, such as metallic compounds and sulfur. Refinement of crude oil produces petroleum products that we use every day, such as motor oils and gasoline. Crude oil is normally transported from wells to refineries through gathering pipelines. Refined petroleum products are normally transported in transmission pipelines to rail or truck terminals for distribution to consumers. Odorant is not added to these products because they have a natural odor.

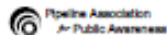
ANHYDROUS AMMONIA is the liquefied form of pure ammonia gas. It is a colorless gas or liquid with an extremely pungent odor. It is normally transported through transmission pipelines located in the Midwest and is used primarily as an agricultural fertilizer or industrial refrigerant.

CARBON DIOXIDE is a heavy gas that is normally transported in transmission pipelines as a compressed fluid. It is a naturally occurring, colorless, odorless and tasteless gas used in the petroleum industry. Under normal conditions, carbon dioxide is stable, inert and nontoxic.

ETHANOL (also called ethyl alcohol) is a colorless liquid that is widely used as an additive to automotive gasoline. It may be transported in buried transmission pipelines.

HYDROGEN GAS is commonly produced from the steam reformation of natural gas. It is frequently used near its production site, with the two main uses being petrochemical processing and ammonia production. Hydrogen is a flammable gas that is colorless, odorless and lighter than air. It is nontoxic, but can act as a simple asphyxiant.

"SOUR" CRUDE OIL AND "SOUR" GAS products containing little or no sulfur are often referred to as "sweet" whereas, products containing high concentrations of sulfur and hydrogen sulfide are commonly referred to as "sour." Hydrogen sulfide (H₂S) is a toxic, corrosive contaminant found in natural gas and crude oil. It has an odor like the smell of rotten eggs or a burnt match. Exposure to relatively low levels of hydrogen sulfide (500 ppm) can be fatal.



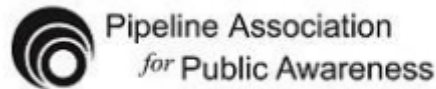
Hazard Information

	Natural Gas	Petroleum Gas	Petroleum Liquids	Anhydrous Ammonia	Carbon Dioxide	Ethanol	Hydrogen Gas	Sour Gas (H ₂ S)	Sour Crude Oil (H ₂ S)	Unrefined Petroleum Gas
INDICATIONS OF A LEAK										
An odor like rotten eggs or a burnt match	(1)	(1)						X	X	(1)
A loud roaring sound like a jet engine	X									X
A white vapor cloud that may look like smoke		X	X	X						X
A hissing or whistling noise	X	X	X	X			X	X	X	X
The pooling of liquid on the ground			X			X				X
An odor like petroleum liquids or gasoline		X	X							X
Fire coming out of or on top of the ground	X	X					X	X	X	X
Dirt blowing from a hole in the ground	X	X					X	X	X	X
A sheen on the surface of water		X	X							X
An area of frozen ground in the summer	X	X			X	X	X	X	X	X
An unusual area of melted snow in the winter	X	X			X	X	X	X	X	X
An area of dead vegetation	X	X	X				X	X	X	X
Bubbling in pools of water	X	X			X		X	X	X	X
An irritating and pungent odor				X					X	X
HAZARDS OF A RELEASE										
Highly flammable and easily ignited by heat or sparks	X	X	X			X	X	X	X	X
Will displace oxygen and can cause asphyxiation	X	X	X	X	X	X	X	X	X	X
Vapors are heavier than air and will collect in low areas	X	X	X	X	X	X	X	X	X	X
Contact with skin may cause burns, injury or frostbite	X	X	X	X	X	X	X	X	X	X
Initial odor may be irritating and deaden the sense of smell								X	X	
Toxic and may be fatal if inhaled or absorbed through skin				X					X	
Vapors are extremely irritating and corrosive				X		X	X	X	X	
Fire may produce irritating and/or toxic gases	X	X	X	X	X	X	X	X	X	X
Runoff may cause pollution			X	X	X	X	X	X	X	X
Vapors may form an explosive mixture with air	X	X	X				X	X	X	X
Vapors may cause dizziness or asphyxiation without warning	(1)	(1)			X		X	X	X	(1)
Is lighter than air and can migrate into enclosed spaces	X						X		X	
EMERGENCY RESPONSE										
Avoid any action that may create a spark	X	X	X	X			X	X	X	X
Do NOT start vehicles, switch lights or hang up phones	X	X	X	X			X	X	X	X
Evacuate the area on foot in an upwind and/or uphill direction	X	X	X	X	X	X	X	X	X	X
Alert others to evacuate the area and keep people away	X	X	X	X	X	X	X	X	X	X
From a safe location, call 911 to report the emergency	X	X	X	X	X	X	X	X	X	X
Call the pipeline operator and report the event	X	X	X	X	X	X	X	X	X	X
Wait for emergency responders to arrive	X	X	X	X	X	X	X	X	X	X
Do NOT attempt to close any pipeline valves	X	X	X	X	X	X	X	X	X	X
Take shelter inside a building and close all windows			X	X			X		X	

(1) These products are naturally odorless and only certain pipeline systems may be odorized.

www.pipelineawareness.org

Additional Resources and Materials



Request Additional Materials

These materials are free, there is no charge for the materials or shipping. Please allow two weeks for delivery. The Pipeline Association for Public Awareness reserves the right to limit the quantity of materials being provided. Videos can be downloaded from the Association's [Pipelineawareness Vimeo Site](#)

Materials *

Quantity *

Name *

First

Last

Pipeline Safety Video Library



Pipelines Informational Video

from Pipelineawareness PRO 5 months ago / CC BY NC ND ALL AUDIENCES

An in-depth look at gas and oil pipelines in the United States and their safe operation.

✓ Follow

+ Collections

↓ Download

Public Folder for Company Documents

The image displays two screenshots of the OneDrive web interface. The left screenshot shows a 'Company Documents' folder with a list of organizations and an 'Additional Information' section. The right screenshot shows a sub-folder 'Whiting Oil and Gas' containing various documents.

Left Screenshot: Company Documents

Shared > Company Documents

Name ↑

- Colorado Pipeline Association
- Kern River Gas Transmission
- Montana Liquids and Gas Pipeline Association
- Sinclair Pipeline Company
- Wyoming Pipeline Association

Additional Information

- [Pipeline Member Directory](#)
- [Pipeline Member Information](#)
- [Sustaining Member Organizations](#)
- [Request Additional Materials](#)
- [Pipeline Safety Facts & Statistics](#)
- [Government & Industry Resources](#)
- [New Member Sign-up](#)

Right Screenshot: Whiting Oil and Gas

Shared > Company Docu... > Colorado Pipeli... > Whiting Oil and Gas

Name ↑

- Whiting Oil and Gas - Company Information
- Whiting Oil and Gas - Emergency Response & Oil Spill Contingency Pl...
- Whiting Oil and Gas - Map - System Mains
- Whiting Oil and Gas - Map
- Whiting Oil and Gas - Pipeline Markers
- Whiting Oil and Gas - SDS Crude Oil (Sweet)
- Whiting Oil and Gas - SDS Natural Gas Liquids (Sweet)
- Whiting Oil and Gas - SDS Produced Water (Sweet)

2018 Stakeholder Surveys

- Excavators are much less likely to operate pipeline valves in the event of an emergency than they were in 2014.
- Many areas indicated improvement. However, results for some questions declined more than the margin of error. This may be influenced by the number of new stakeholders included in the previous year's mailings as those lists are used for sample selection (i.e. about 40% of the emergency responders were new to the program in 2017).

2018 Stakeholder Surveys

- The preference for electronic communications continues to increase.
- The additional information needed by stakeholders is widely varied.
- The percentage of stakeholders feeling like they need additional information is declining
- The percentage of stakeholders offering suggestions for improving the communications is declining

Program Changes

- ER – initiate email communications with CEMAs containing a link to an online form where stakeholders can submit specific requests for additional information
- PO - Include postage paid business reply envelope and a reply card in the packet to facilitate specific requests for additional information
- EX – add a space or an item in the readership survey in the back of the magazine where excavators can request additional specific information

New Initiatives and General Discussion

- API RP-1162 Third Edition
- PERI Programs
- State Association Activities
- Sustaining Member Organizations
- January Program Meeting - 1/9/2019

Adjourn